

### Live Tooling for Mazak Quick Turn Smart 300/350M



#### ER40 STRAIGHT TYPE

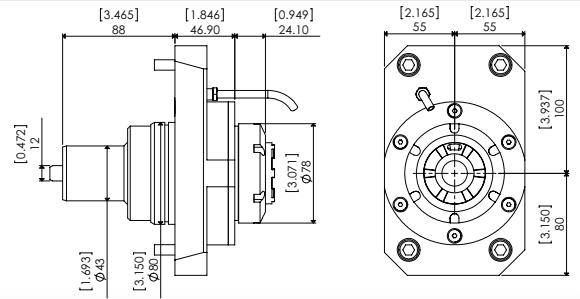
1000 PSI Coolant Thru Capable  
High Torque of 140 Nm/ 6500 RPM Max

> External Coolant

Lyndex-Nikken Part Number: MZST80-ER40X  
Mazak ref.: 5B088000601

> Internal Coolant

Lyndex-Nikken Part Number: MZST80-ER40X-C  
Mazak ref.: 5B088000501

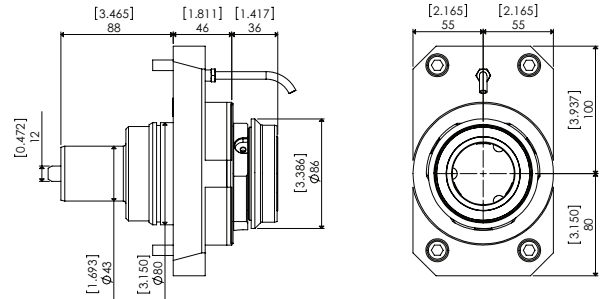


#### MI63 QUICK CHANGE STRAIGHT TYPE

1000 PSI Coolant Thru Capable  
High Torque of 140 Nm/ 6500 RPM Max

Lyndex-Nikken Part Number: MZST80-MI63X  
Mazak ref.: -

> See back for MI attachments details



#### ER40 90 DEGREE TYPE

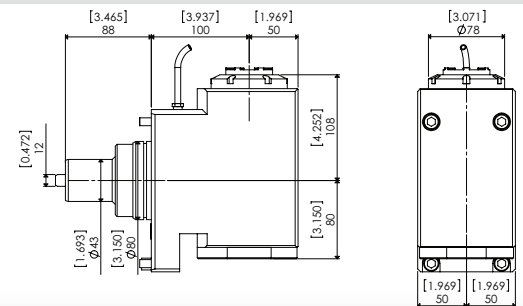
1000 PSI Coolant Thru Capable  
High Torque of 100 Nm/ 6500 RPM Max

> External Coolant

Lyndex-Nikken Part Number: MZST80-ER40Z  
Mazak ref.: 5B088000402

> Internal Coolant

Lyndex-Nikken Part Number: MZST80-ER40Z-C  
Mazak ref.: 5B088000302

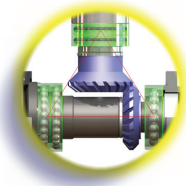
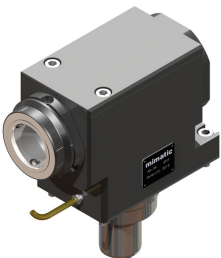
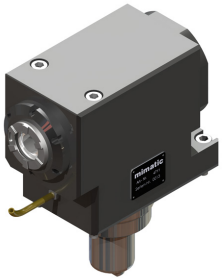
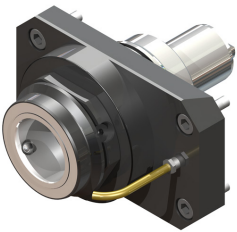
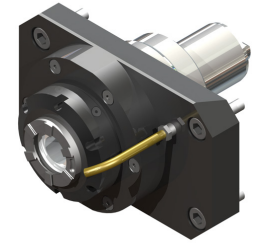
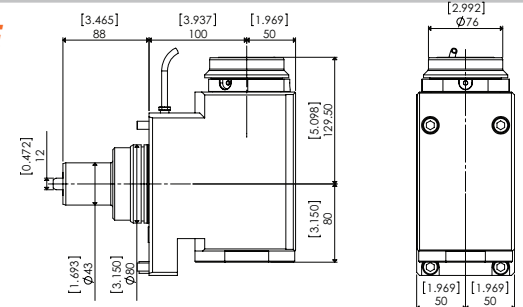


#### MI63 QUICK CHANGE 90 DEGREE TYPE

1000 PSI Coolant Thru Capable  
High Torque of 100 Nm/ 6500 RPM Max

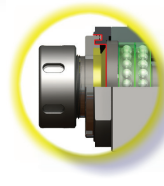
Lyndex-Nikken Part Number: MZST80-MI63Z  
Mazak ref.: -

> See back for MI attachments details



#### Gears for Stability

- Hand matched gears to minimize backlash
- Custom Ground Spiral Bevel Gears to maximize torque output
- Placement of ABEC 7 bearings based on FEA analysis balances stress output evenly throughout assembly.



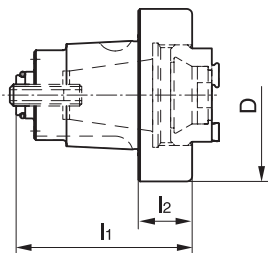
#### Protective Sealing System

- Labyrinth Seal provides a high pressure multi-barrier construction that prevents contaminants and coolant from entering the main chamber.

# Mazak MI63 Quick Change Attachments

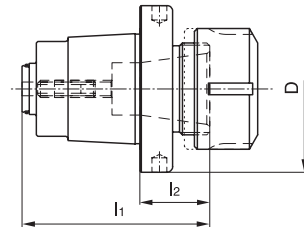
SMART SERIES

- Universal Tool Clamping iSystem
- Reduce Machine Downtimes
- Presetting of The Tools Off-Line
- Tool Change Within Seconds
- Interface Concentricity < 0.002mm



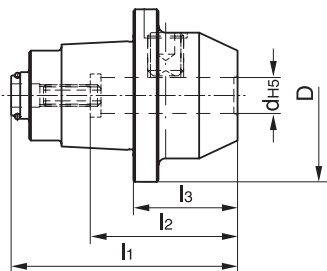
**Collet Chuck DIN 6499 - ER Type Short Style, Clamping Nut Inside**

Part Number	Collet	l1	l2	D
155471	ER32	2.480"	0.551"	2.953"
155496	ER40	2.717"	0.787"	2.953"



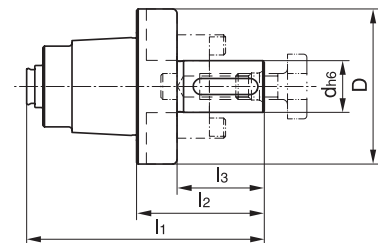
**Collet Chuck DIN 6499 - ER Type Long Style, Clamping Nut Outside**

Part Number	Collet	l1	l2	D
155475	ER32	3.150"	1.850"	2.953"
155451	ER40	3.307"	0.791"	2.953"



**Weldon Toolholder DIN 1835 B**

Part Number	l1	l2	l3	d(h5)	D
155470	3.189"	1.457"	1.457"	6mm	2.953"
155459	3.228"	1.457"	1.457"	8mm	2.953"
155490	3.346"	1.614"	1.417"	10mm	2.953"
155509	3.484"	1.811"	1.535"	12mm	2.953"
155463	3.484"	1.811"	1.535"	14mm	2.953"
155482	3.583"	1.929"	1.654"	16mm	2.953"
155474	3.661"	2.008"	1.732"	20mm	2.953"
155464	4.331"	2.323"	2.402"	25mm	2.953"
166815	3.189"	1.457"	1.260"	1/4"	2.953"
166805	3.346"	1.614"	1.417"	3/8"	2.953"
166813	3.484"	1.811"	1.555"	1/2"	2.953"
166807	3.583"	1.929"	1.654"	5/8"	2.953"
166804	3.661"	2.008"	1.732"	3/4"	2.953"
166812	4.331"	2.323"	2.402"	1"	2.953"

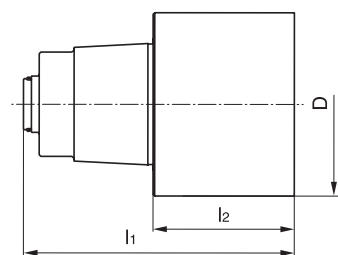


**Combination Shell Mill Arbor**

Part Number	l1	l2	l3	d(h6)	D
155512	3.780"	1.850"	1.220"	22mm (0.866")	2.953"
155465	3.858"	1.929"	1.299"	27mm (1.063")	2.953"

**Whistle Notch Toolholder DIN 1835 E**

Part Number	l1	l2	l3	d(h5)	D
166104	3.189"	1.417"	1.260"	6mm	2.953"
166105	3.228"	1.417"	1.299"	8mm	2.953"
166110	3.346"	1.575"	1.417"	10mm	2.953"
166112	3.484"	1.772"	1.555"	12mm	2.953"
166113	3.484"	1.772"	1.555"	14mm	2.953"
166114	3.583"	1.890"	1.654"	16mm	2.953"
166115	3.661"	1.969"	1.732"	20mm	2.953"
166116	4.331"	2.205"	2.402"	25mm	2.953"
166797	3.189"	1.417"	1.260"	1/4"	2.953"
166799	3.346"	1.575"	1.417"	3/8"	2.953"
166796	3.484"	1.772"	1.555"	1/2"	2.953"
166803	3.583"	1.890"	1.654"	5/8"	2.953"
166798	3.661"	1.969"	1.732"	3/4"	2.953"
166795	4.331"	2.205"	2.402"	1"	2.953"



**Blank**

Part Number	l1	l2	D
121557	5.079"	3.150"	2.953"

